

# MONTHLY MEMBERSHIP PROGRESS REPORT

LOCATION MICHIGAN

District 11 E2

Results as of: 1/31/2022

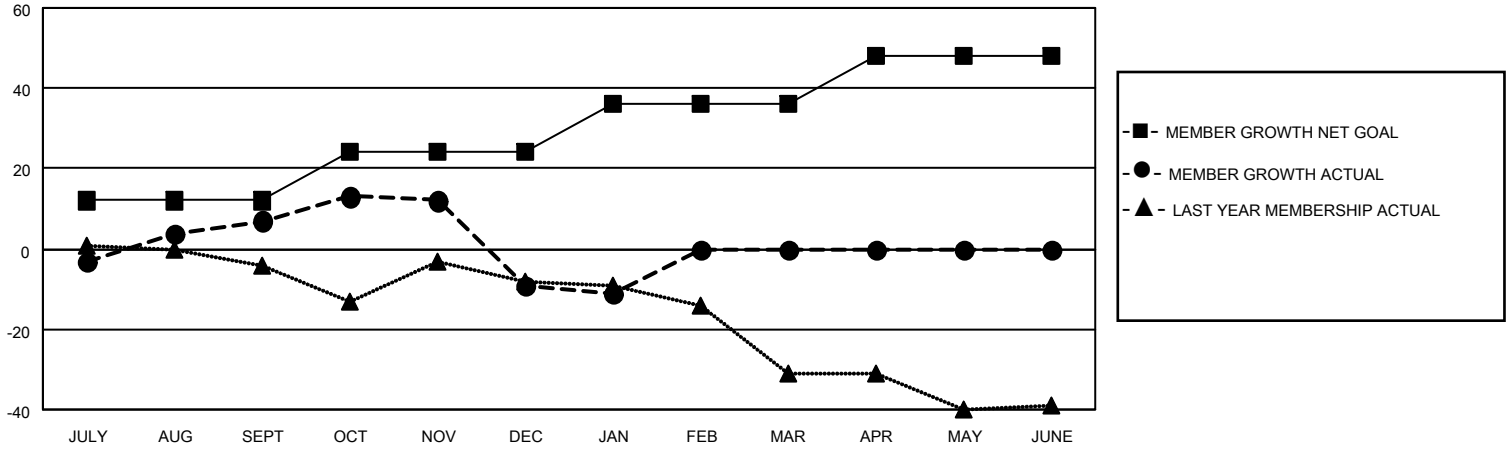
Clubs			
RESULTS FOR 2021-2022			
QUARTER	NEW CLUB GOAL	NEW CLUBS	DROPPED CLUBS
JULY/AUG/SEPT	0	0	0
OCT/NOV/DEC	1	0	0
JAN/FEB/MAR	0	0	0
APR/MAY/JUNE	1	0	0

Members			
RESULTS FOR 2021-2022			
QUARTER	MEMBER GROWTH NET GOAL	MEMBER GROWTH ACTUAL	DROPPED MEMBERS ACTUAL (including transfers)
JULY/AUG/SEPT	12	20	11
OCT/NOV/DEC	12	27	38
JAN/FEB/MAR	12	10	12
APR/MAY/JUNE	12	0	0

**GOALS AND ACTUAL NEW CLUBS CUMULATIVE**



**GOALS AND ACTUAL MEMBERS CUMULATIVE**



**DROPPED CLUBS: 0**

**15 CLUBS OF 28 ADDED 1 OR MORE NEW MEMBERS**

**GENDER DISTRIBUTION**

MALE	481 (68.13%)
FEMALE	225 (31.87%)
NON BINARY	0 (0.00%)
PREFER NOT TO ANSWER	0 (0.00%)

**DROPPED MEMBERS**

[CLICK HERE FOR CUMULATIVE MEMBERSHIP DATA](#)

DECEASED	21
CLUB CANCELLED	0
OTHER	40
<b>TOTAL</b>	<b>61</b>

TOTAL FAMILY UNIT MEMBERS 104

FAMILY MEMBERS PAYING HALF DUES 52